

State of Rhode Island and Providence Plantations

Budget



Fiscal Year 2013

Volume III – Education

Lincoln D. Chafee, Governor

Agency

Historical Preservation And Heritage Commission

Agency Mission

Identify and protect historic and prehistoric sites, buildings, and districts throughout the State of Rhode Island and commemorate the history and culture of the State; promote and preserve the State's ethnic and cultural traditions; and provide a better understanding of the various ethnic cultures, which comprise the State's population.

Agency Description

The Rhode Island Historical Preservation and Heritage Commission is the state office for historic preservation and for sponsorship of state heritage activities. It is Rhode Island's only statewide preservation program to identify and protect historic buildings, districts, and archeological sites. The commission is responsible for developing a state historical preservation plan, and for survey and planning activities which provide for in-depth studies of each city and town to identify, evaluate, and record sites, structures, districts, and objects of historical, architectural, cultural, or archeological significance to the State.

The commission sponsors and/or coordinates heritage festivals, heritage seminars, conferences, and symposia, and publishes scholarly and popular works relating to the social, political, and cultural development of the State. It also coordinates programs with other private or public groups or agencies which will meet the cultural needs of Rhode Island's citizens. The commission also organizes the Eisenhower House at Fort Adams State Park in Newport.

The commission develops and implements programs for the preservation of historic resources. Federal and state projects are reviewed by the commission to assess their effect on specific cultural resources. The commission administers programs of financial assistance, which include grants, loans, and tax credits for restoration projects. A wide range of information and technical assistance is provided to citizens who own historic properties or are interested in preserving the heritage of their neighborhood and community. The commission certifies municipal historic district zoning programs, which meet minimum standards, and annually administers funds to these "certified local governments."

Statutory History

Title 42, Chapter 45 of the Rhode Island General Laws established the Rhode Island Historical Preservation Commission and defined the duties of the Executive Director and commission members. Executive Order Number 10, issued July 1, 1977, initially created the Heritage Commission. In 1981, the General Assembly enacted Title 42, Chapter 79 of the Rhode Island General Laws establishing the commission as a permanent state agency. In the 1994 legislative session the General Assembly repealed Title 42, Chapter 79 and amended Title 42, Chapter 45 to add Heritage Commission responsibilities creating the Rhode Island Historical Preservation and Heritage Commission.

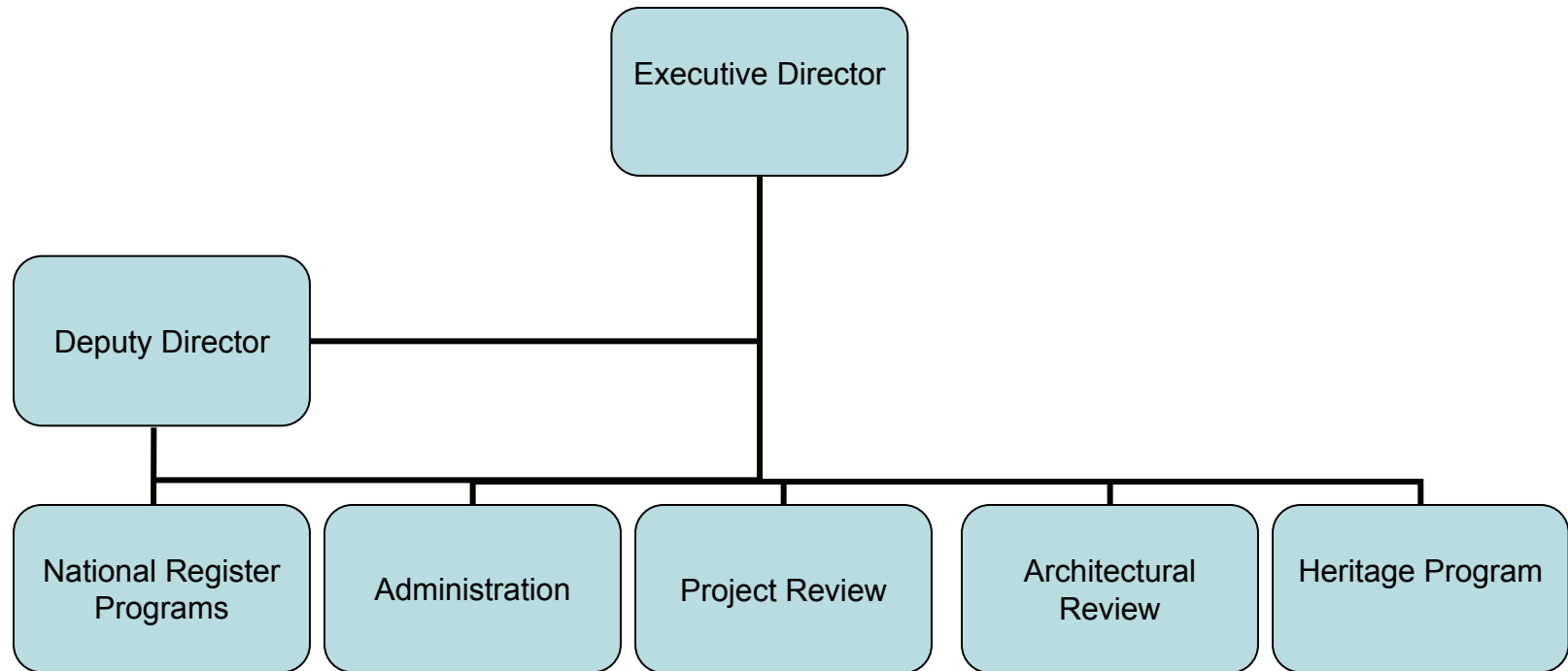
Budget

Historical Preservation And Heritage Commission

| | FY 2010 Audited | FY 2011 Audited | FY 2012 Enacted | FY 2012 Revised | FY 2013 Recommend |
|---|--------------------|--------------------|--------------------|--------------------|----------------------|
| Expenditures By Program | | | | | |
| Central Management | 1,901,211 | 2,183,534 | 2,869,173 | 2,756,473 | 2,790,501 |
| Total Expenditures | \$1,901,211 | \$2,183,534 | \$2,869,173 | \$2,756,473 | \$2,790,501 |
| Expenditures By Object | | | | | |
| Personnel | 1,487,935 | 1,564,159 | 1,740,394 | 1,631,983 | 1,661,073 |
| Operating Supplies and Expenses | 88,463 | 100,087 | 102,579 | 99,353 | 144,440 |
| Assistance and Grants | 322,492 | 509,923 | 935,125 | 935,137 | 894,988 |
| Subtotal: Operating Expenditures | 1,898,890 | 2,174,169 | 2,778,098 | 2,666,473 | 2,700,501 |
| Capital Purchases and Equipment | 2,321 | 9,365 | 91,075 | 90,000 | 90,000 |
| Total Expenditures | \$1,901,211 | \$2,183,534 | \$2,869,173 | \$2,756,473 | \$2,790,501 |
| Expenditures By Funds | | | | | |
| General Revenue | 1,256,875 | 1,294,878 | 1,469,797 | 1,337,855 | 1,370,938 |
| Federal Funds | 589,499 | 831,658 | 846,195 | 886,047 | 886,057 |
| Restricted Receipts | 54,837 | 56,998 | 478,181 | 457,571 | 458,506 |
| Operating Transfers from Other Funds | - | - | 75,000 | 75,000 | 75,000 |
| Total Expenditures | \$1,901,211 | \$2,183,534 | \$2,869,173 | \$2,756,473 | \$2,790,501 |
| FTE Authorization | 16.6 | 16.6 | 16.6 | 16.6 | 16.6 |
| Agency Measures | | | | | |
| Minorities as a Percentage of the Workforce | 12.0% | 6.7% | 6.7% | 6.7% | 12.0% |
| Females as a Percentage of the Workforce | 64.0% | 67.0% | 67.0% | 67.0% | 64.0% |
| Persons with Disabilities as a Percentage of the Workforce | - | - | - | - | - |
| Historic Properties Nominated to the National Registry Annually - Properties Listed | 117 | 493 | 328 | 328 | 300 |
| Objective | 250 | 250 | | 250 | 250 |
| Public Attendance at Heritage Program Assisted Events | 39,150 | 41,050 | 40,000 | 40,000 | 40,000 |
| Objective | 34625 | 34625 | | 40,000 | 40,000 |
| Project Review | 1,147 | 1,363 | 1,300 | 1,300 | 1,300 |
| Objective | 1080 | 1080 | | N/A | N/A |
| Architectural Review/Historic Rehabilitation Tax Credits - Projects Reviewed | 33 | 23 | 20 | 20 | 20 |
| Objective | 33 | 23 | | 20 | 20 |

The Agency

Historical Preservation and Heritage Commission



Personnel

Historical Preservation And Heritage Commission Central Management

| | Grade | FY 2012 | | FY 2013 | |
|--|-------|-------------|--------------------|-------------|--------------------|
| | | FTE | Cost | FTE | Cost |
| Classified | | | | | |
| Supervising Historic Preservation Specialist | 131 | 1.0 | 77,228 | 1.0 | 77,228 |
| Principal Historic Preservation Specialist | 128 | 5.0 | 343,200 | 5.0 | 326,670 |
| Senior Historic Preservation Specialist | 125 | 5.0 | 294,923 | 5.0 | 294,923 |
| Historic Preservation Specialist | 121 | 1.0 | 48,838 | 1.0 | 48,838 |
| Heritage Commission Aide | 118 | 2.0 | 96,520 | 2.0 | 96,520 |
| Fiscal Clerk | 114 | 1.0 | 43,606 | 1.0 | 43,606 |
| Senior Word Processing Typist | 112 | 0.6 | 26,040 | 0.6 | 26,040 |
| Subtotal | | 15.6 | \$930,355 | 15.6 | \$913,825 |
| Unclassified | | | | | |
| Executive Director | A37 | 1.0 | 107,450 | 1.0 | 107,450 |
| Subtotal | | 1.0 | \$107,450 | 1.0 | \$107,450 |
| Turnover | | - | (66,278) | - | (49,441) |
| Subtotal | | - | (\$66,278) | - | (\$49,441) |
| Total Salaries | | 16.6 | \$971,527 | 16.6 | \$971,834 |
| Benefits | | | | | |
| Defined Contribution Plan | | - | - | - | 9,718 |
| FICA | | - | 75,478 | - | 75,541 |
| Medical | | - | 232,112 | - | 262,888 |
| Payroll Accrual | | - | - | - | 5,833 |
| Retiree Health | | - | 67,719 | - | 67,740 |
| Retirement | | - | 226,845 | - | 209,131 |
| Subtotal | | - | \$602,154 | - | \$630,851 |
| Total Salaries and Benefits | | 16.6 | \$1,573,681 | 16.6 | \$1,602,685 |
| Cost Per FTE Position | | | \$94,800 | | \$96,547 |
| Statewide Benefit Assessment | | - | 37,015 | - | 37,026 |
| Temporary and Seasonal | | - | 15,612 | - | 15,612 |
| Subtotal | | - | \$52,627 | - | \$52,638 |
| Payroll Costs | | 16.6 | \$1,626,308 | 16.6 | \$1,655,323 |
| Purchased Services | | | | | |
| Building and Grounds Maintenance | | - | 1,425 | - | 1,500 |
| Clerical and Temporary Services | | - | 2,500 | - | 2,500 |
| Other Contract Services | | - | 1,750 | - | 1,750 |
| Subtotal | | - | \$5,675 | - | \$5,750 |
| Total Personnel | | 16.6 | \$1,631,983 | 16.6 | \$1,661,073 |

Personnel

Historical Preservation And Heritage Commission Central Management

| | Grade | FY 2012 | | FY 2013 | |
|--|-------|-------------|--------------------|-------------|--------------------|
| | | FTE | Cost | FTE | Cost |
| Distribution By Source Of Funds | | | | | |
| General Revenue | | 11.2 | 1,079,468 | 11.2 | 1,148,360 |
| Federal Funds | | 5.1 | 515,753 | 5.1 | 478,026 |
| Restricted Receipts | | 0.3 | 36,762 | 0.3 | 34,687 |
| Total All Funds | | 16.6 | \$1,631,983 | 16.6 | \$1,661,073 |

Central Management

Historic Properties Nominated to the National Registry Annually - Properties Listed

The documenting historic properties and nominating properties to the National Register of Historic Places in accordance with state and National Park Service procedures is a fundamental responsibility of the RI Historical Preservation & Heritage Commission. This indicator is related to the commission's objective to identify and protect historic sites and buildings throughout the state and once identified nominate those sites to the National Registry.

Public Attendance at Heritage Program Assisted Events

The Heritage program documents, supports, and celebrates the cultural heritage of Rhode Island's people through publications and events. Heritage program activities are a core part of the Commission's mission. This indicator is a measure of the public attendance at Heritage Program-assisted events. The base line used for this measure is the public attendance for all Heritage Program-assisted events that occurred in FY 97. This number was estimated at 34,625. The objective is to meet or exceed this number.

Project Review

The Project Review process is a fundamental aspect of the RI Historical Preservation & Heritage Commission. The commission's objective is to review ninety percent of projects within fifteen days of the review request.

Architectural Review/Historic Rehabilitation Tax Credits - Projects Reviewed

The Architectural Review/Tax Credit program provides professional architectural design review for projects to rehabilitate historic buildings. The Tax Credit program specifically leverages private investment in rehabilitating historic properties by providing a tax incentive. Federal and State law provides that owners of historic properties who spend money to rehabilitate their historic property may qualify for tax credits. The program results in the physical preservation and continuing or adaptive re-use of historic buildings. Professional architects on the RIHPHC staff conduct reviews in accordance with federal historic preservation standards. In the ten-years 2001 to 2011, a total of \$1.7 Billion was invested in 2,622 historic buildings in Rhode Island.

This performance measure tracks the number of projects reviewed each year and the dollar value of investment represented by these projects.

Since the suspension of new State tax credit applications as of January 1, 2008, RIHPHC staff reviewers have continued to review and assist projects that filed applications prior to 2008 and new applicants for federal tax credits. Presently, 81 projects are pending with a combined investment value of \$632 million.

In addition to review of tax credit projects, RIHPHC architects provide expertise to other projects under review, such as historic State properties like the State House, Colony House, Old State House, Eisenhower House and Fort Adams, Taft Hall and East Hall at the University of Rhode Island, and buildings at the state Pastore Complex. Other historic preservation projects that received assistance from RIHPHC architects in FY2011 include Washington Square, Casino Theatre, and Rose Island Lighthouse, Newport; Kingston Railroad Station, South Kingstown; Burnside Building, Bristol; Lederer Theatre (Trinity Rep), Prentice House, Providence River Pedestrian Bridge, Providence; and a number of Community Development and affordable housing projects throughout the state.

The commission's objective is to review 100% of tax credit applications within 30 days of the completed application submission.
